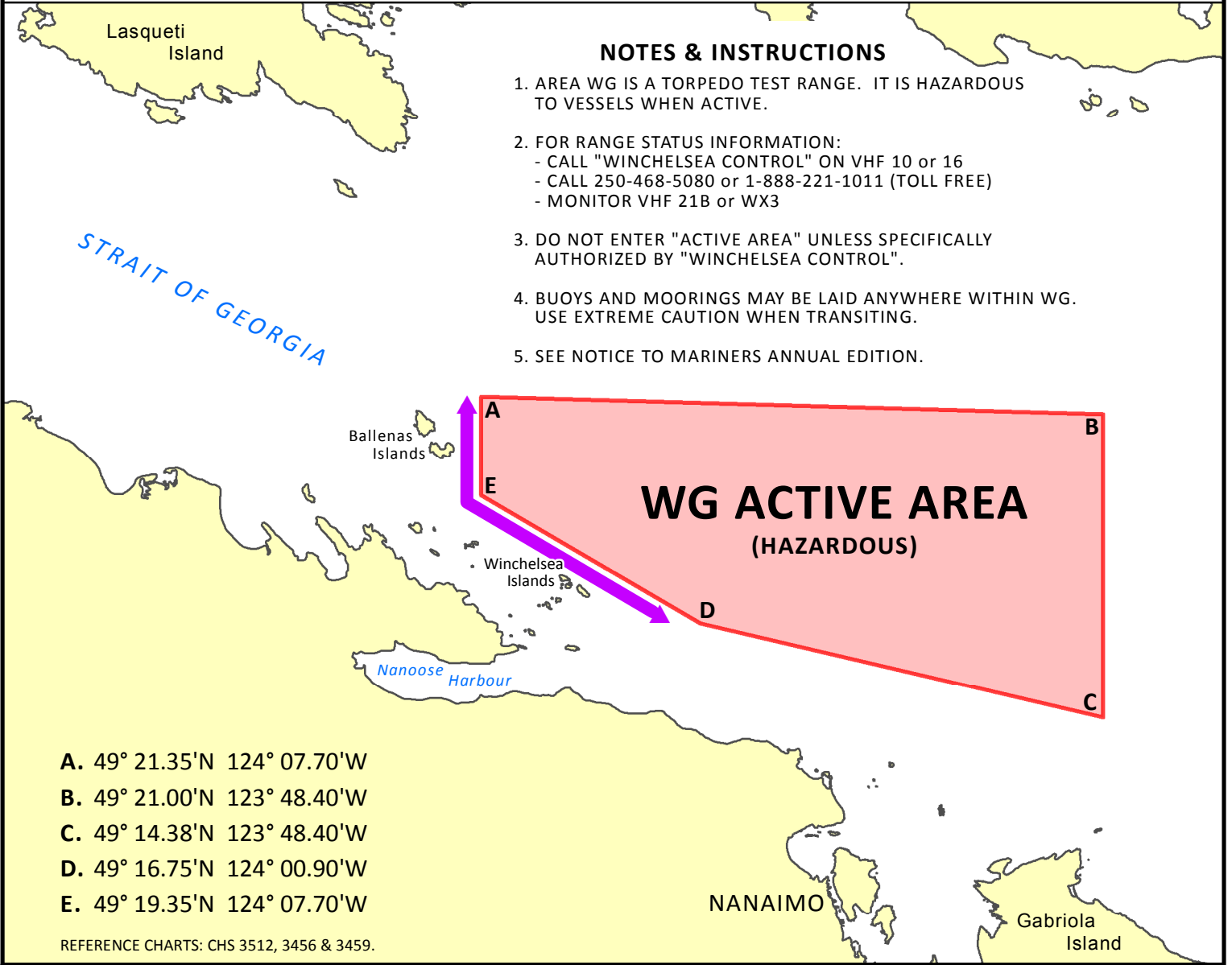




NOTICE OF HAZARDOUS AREA DEPARTMENT OF NATIONAL DEFENCE TORPEDO TEST RANGE



NOTES & INSTRUCTIONS

1. AREA WG IS A TORPEDO TEST RANGE. IT IS HAZARDOUS TO VESSELS WHEN ACTIVE.
2. FOR RANGE STATUS INFORMATION:
 - CALL "WINCHELSEA CONTROL" ON VHF 10 or 16
 - CALL 250-468-5080 or 1-888-221-1011 (TOLL FREE)
 - MONITOR VHF 21B or WX3
3. DO NOT ENTER "ACTIVE AREA" UNLESS SPECIFICALLY AUTHORIZED BY "WINCHELSEA CONTROL".
4. BUOYS AND MOORINGS MAY BE LAID ANYWHERE WITHIN WG. USE EXTREME CAUTION WHEN TRANSITING.
5. SEE NOTICE TO MARINERS ANNUAL EDITION.

Canadian Forces Maritime Experimental and Test Ranges (CFMETR) – Nanoose Bay, BC

The Canadian Forces Maritime Experimental and Test Ranges tests ship and aircraft systems and torpedoes launched by surface vessels, submarines, or aircraft. No explosives are used; however, a hazard exists due to the possibility of the torpedo homing on vessels and then the vessel being struck by the torpedo on its way to the surface.

Testing is usually carried out during daylight hours Monday to Saturday. During testing, area "WG" is "Active". Any vessel within the area will be required to clear or stop on demand from the "Winchelsea Island Control" or any of the range vessels or range helicopter. The positions of these coordinates are clearly marked on the diagram above.

A transit area 1,000 yards north of Winchelsea Island and 1,000 yards east of South Ballenas Island is recommended to enable mariners to transit safely around the active area. It also facilitates unimpeded access to marina facilities in Schooner Cove and Nanoose Bay. The active range area is clearly depicted on CHS charts 3512, 3456 and 3459 by means of pecked lines.

Additional information on active range hours or for safe transit through the area may be obtained from:

- a. Winchelsea Island Control at 250-468-5080 or 1-888-221-1011 (next day's activity only);
- b. CFMETR Range Officer at 250-468-5002 (long range planning);
- c. Winchelsea Island Control VHF CH 10 or 16 (for safe transit area information when approaching Area "WG"); or
- d. VHF 21B or Weather 3 (listen only, for active times).

Area "WG" constitutes a "Defence Establishment" as defined in the National Defence Act to which the Defence Controlled Access Area Regulations apply. Vessels which do not comply with direction from either Winchelsea control or Range Patrol Vessels may be charged for trespassing.

Range vessels exhibit a flashing red light in addition to the prescribed lights and shapes. These vessels may operate outside of scheduled hours and should not be approached within 3,000 yards because they may be in a three-point moor with mooring lines extending to buoys 1,500 yards away. Additionally, lighted and unlighted mooring buoys are randomly located within the area. Mariners are advised to use caution when transiting this area during non-active range periods to avoid mooring buoys and lines.